

2025/2026

Autumn/winter

PRINTS
COLORS
MOOD



New print collection



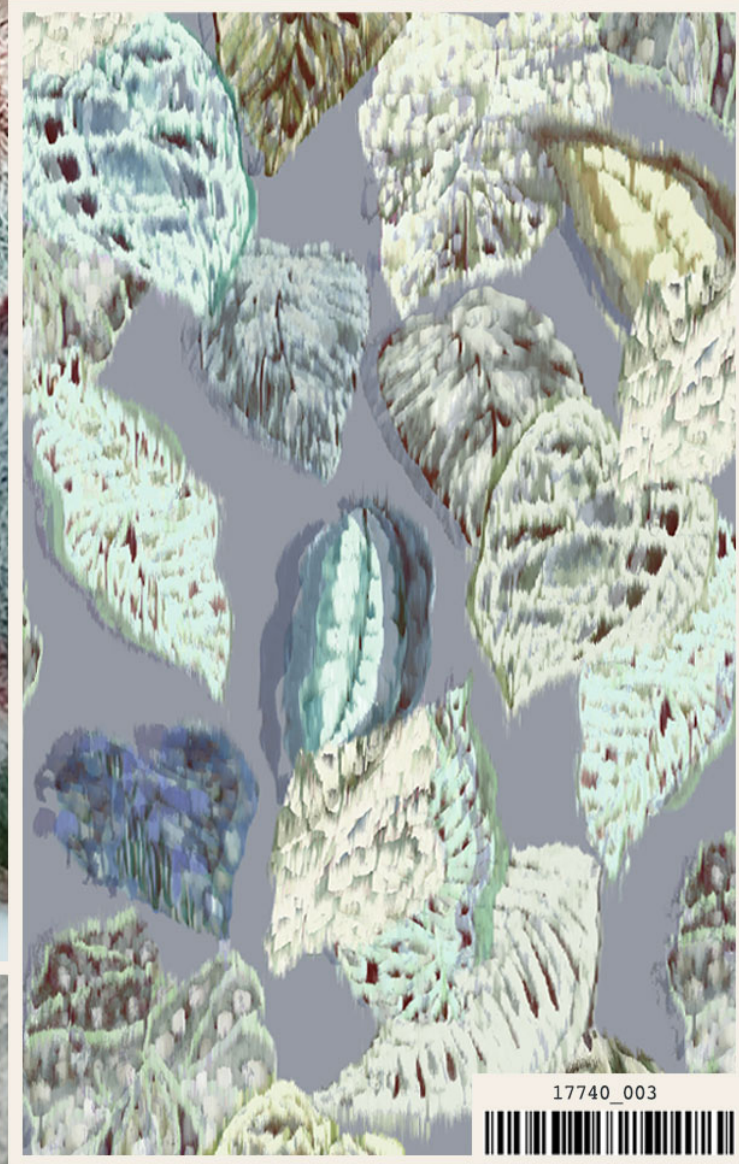
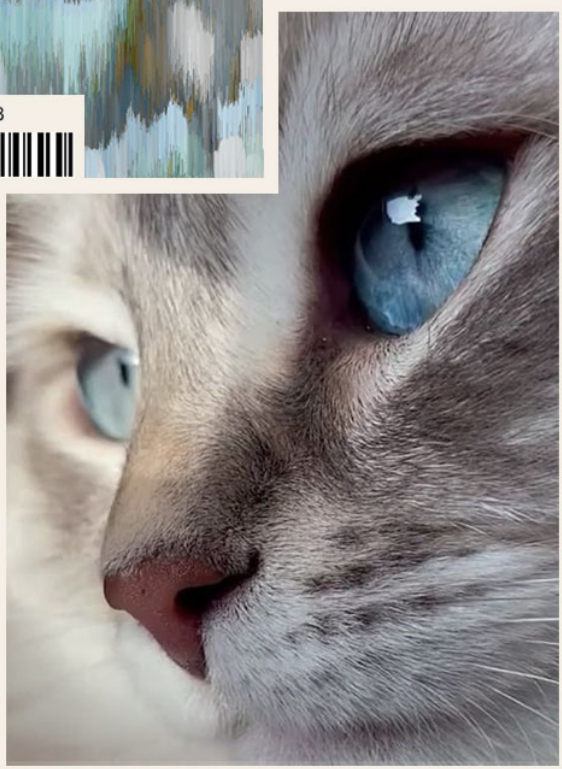
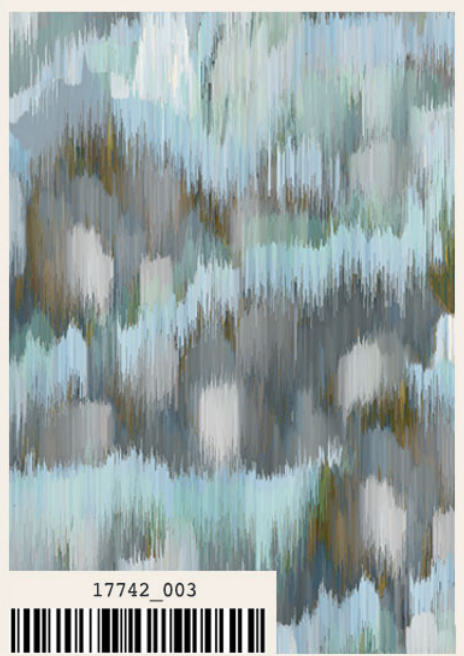
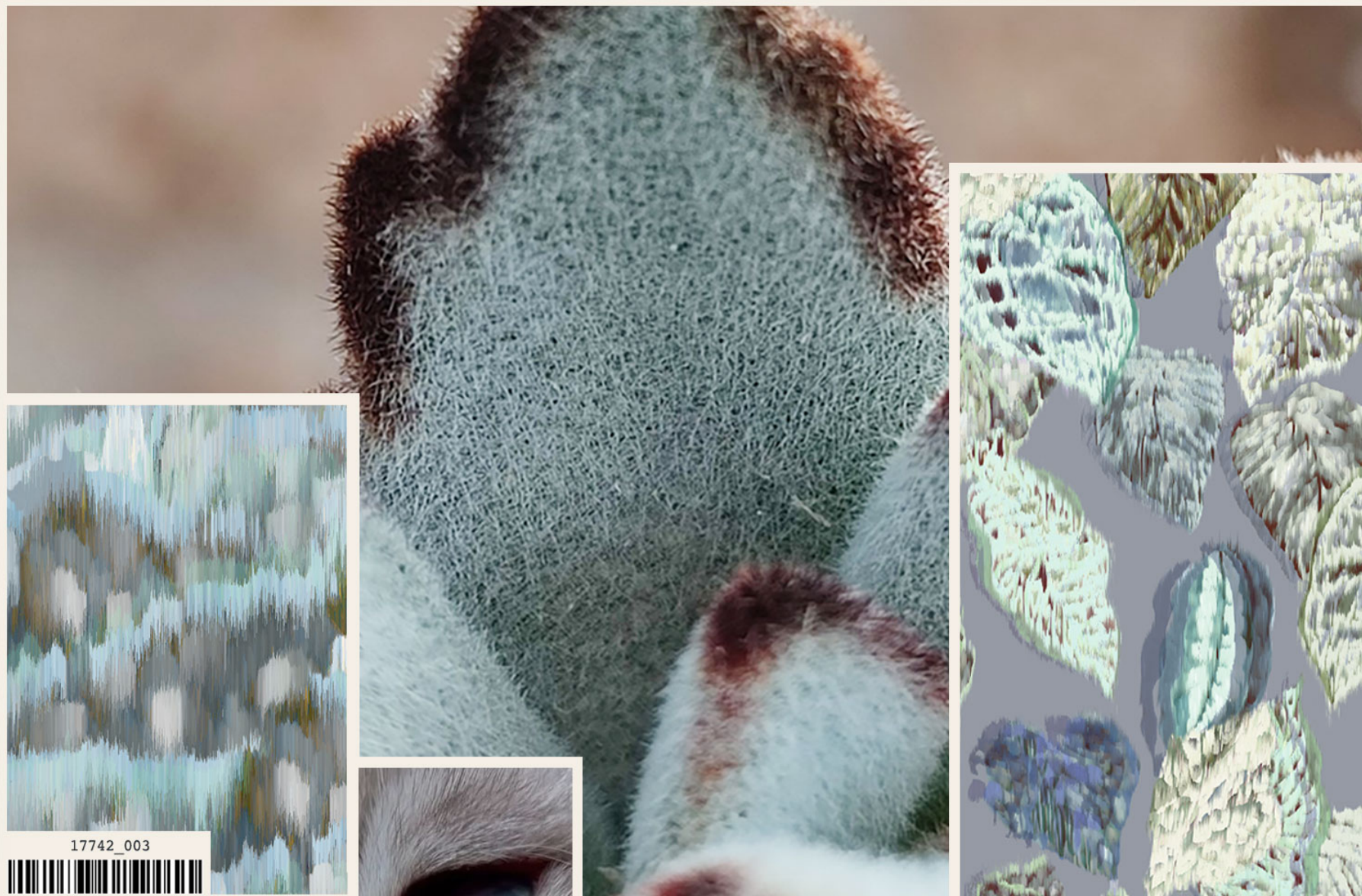
"Color is vibration like music; everything is vibration."

Marc Chagall

"The clothes I prefer are those that I create for a life
that does not yet exist: the world of tomorrow."

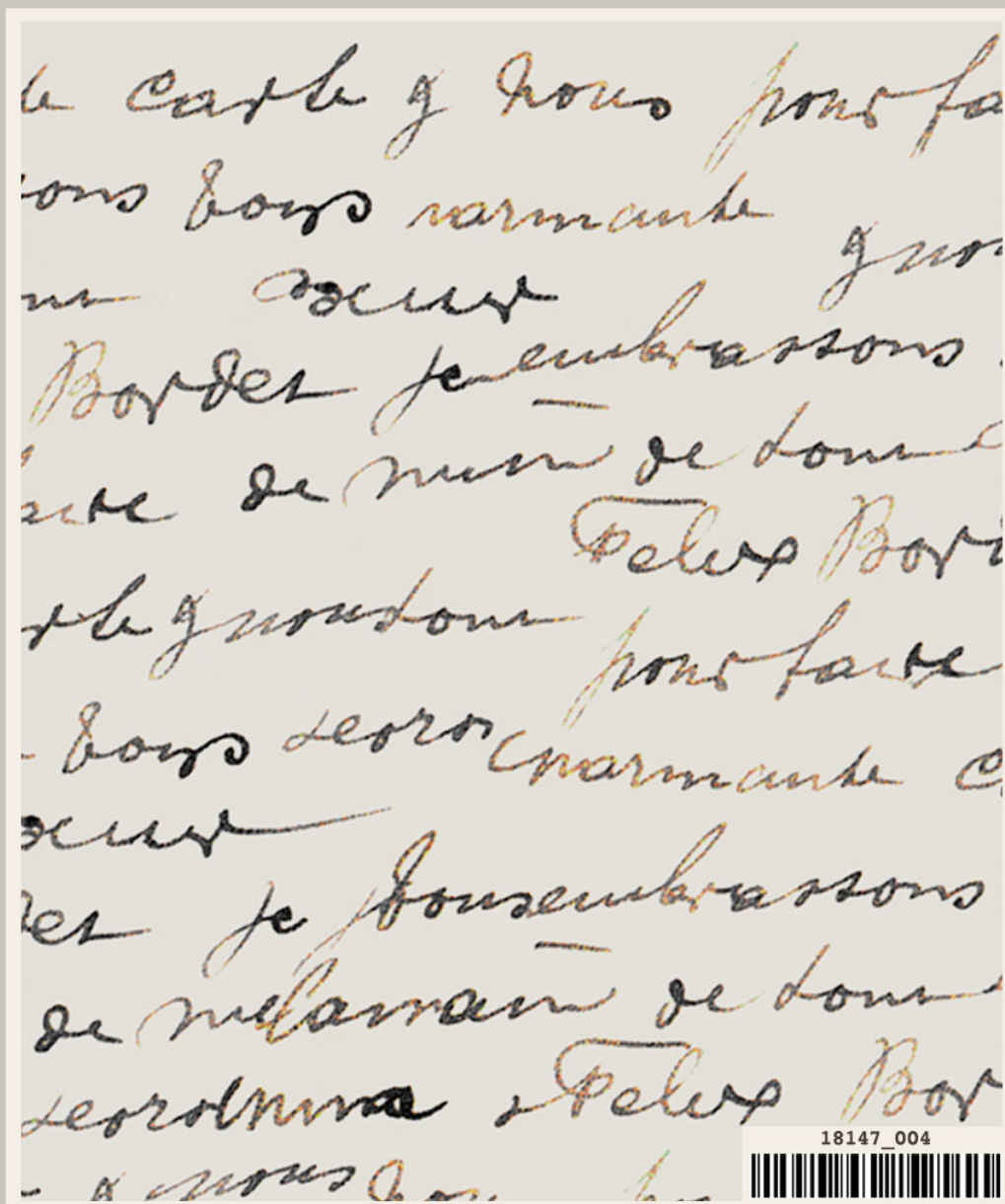
Pierre Cardin

FROSTED COLORS / COLORI BRINATI

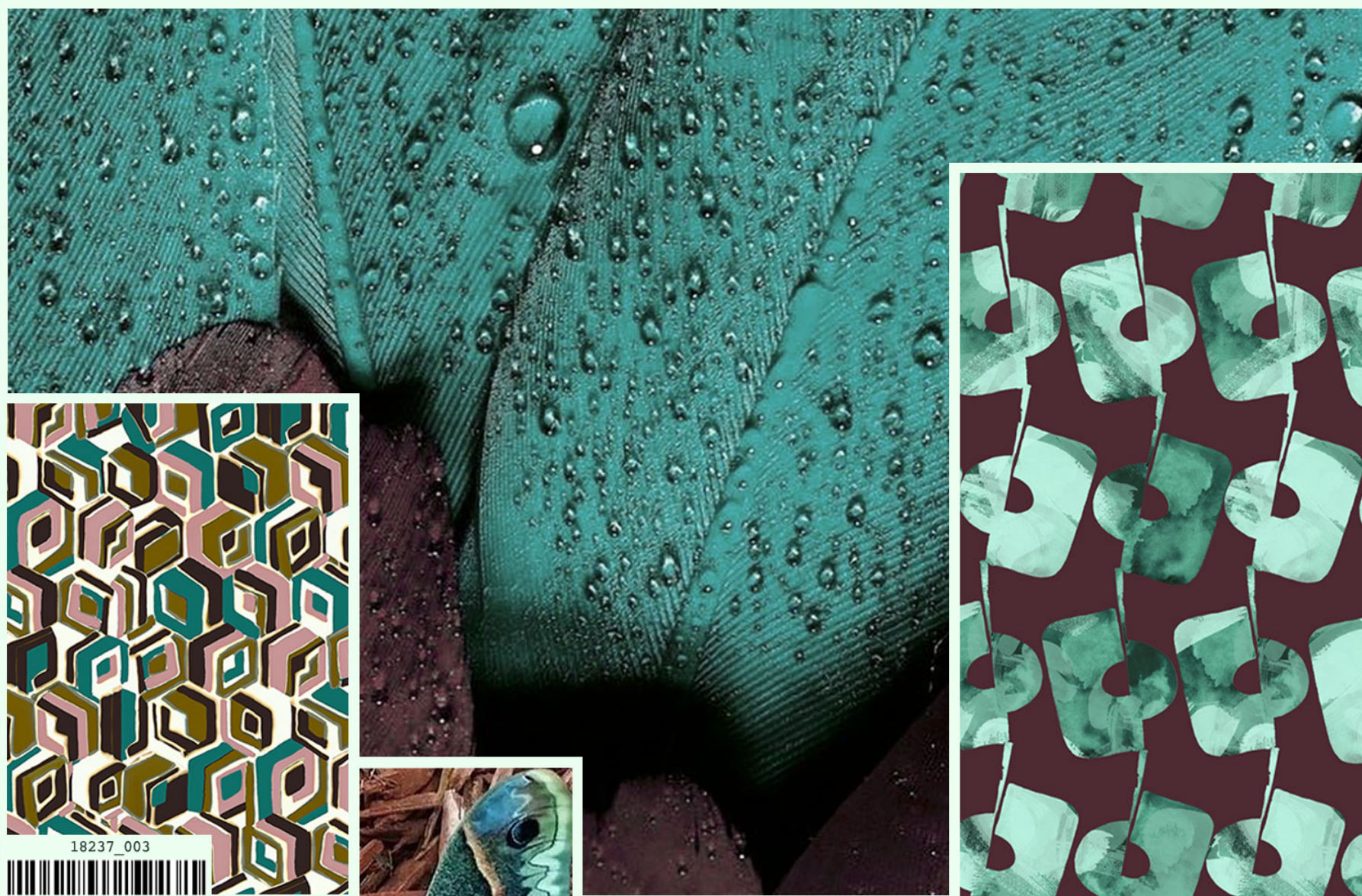


As if it preserved magic dust, the winter frost shows us the quiet of the snow-covered landscapes and sleeping Mother Nature

FROSTED COLORS / COLORI BRINATI



EMERALD GREEN/VERDE SMERALDO



18237_003

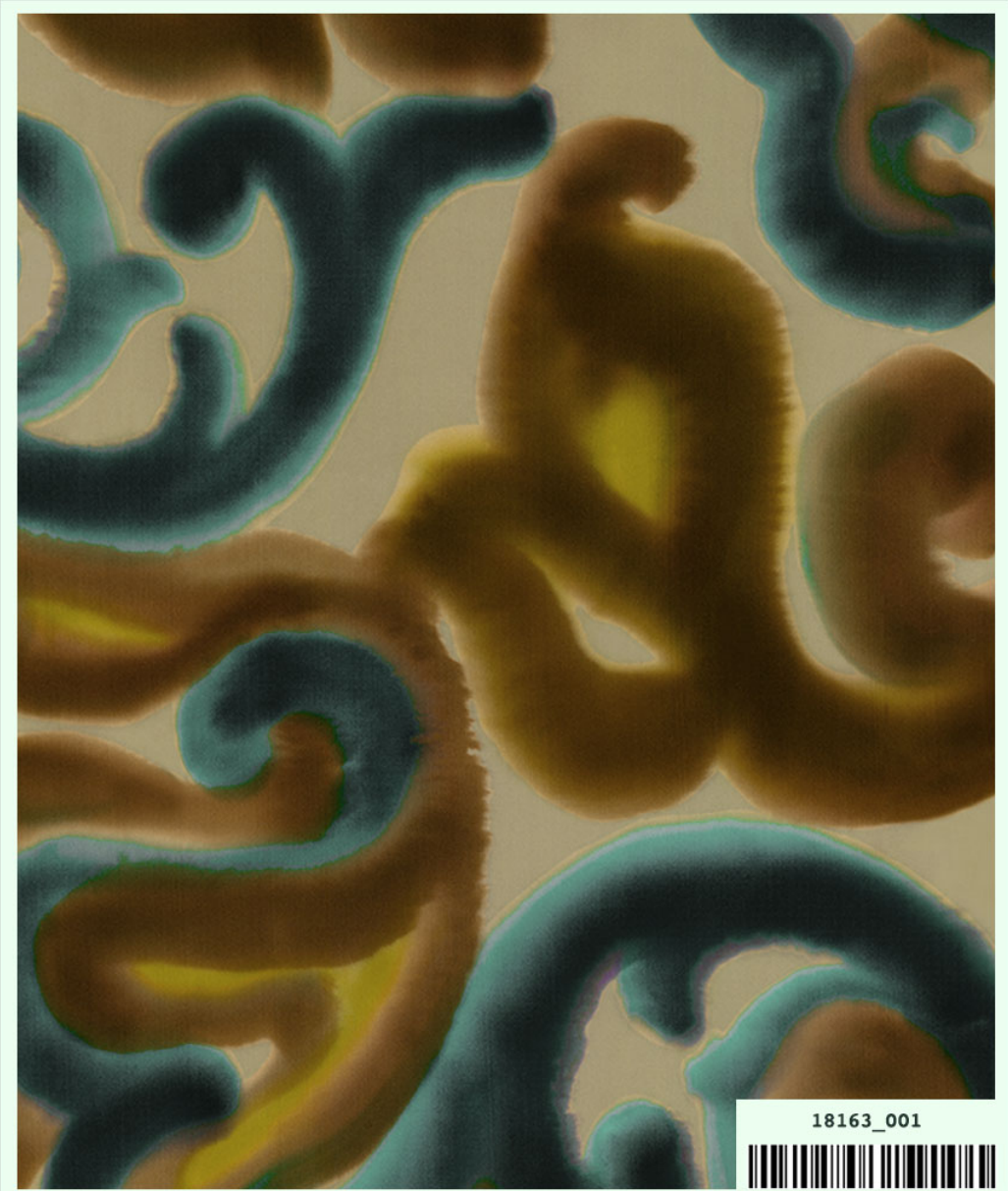
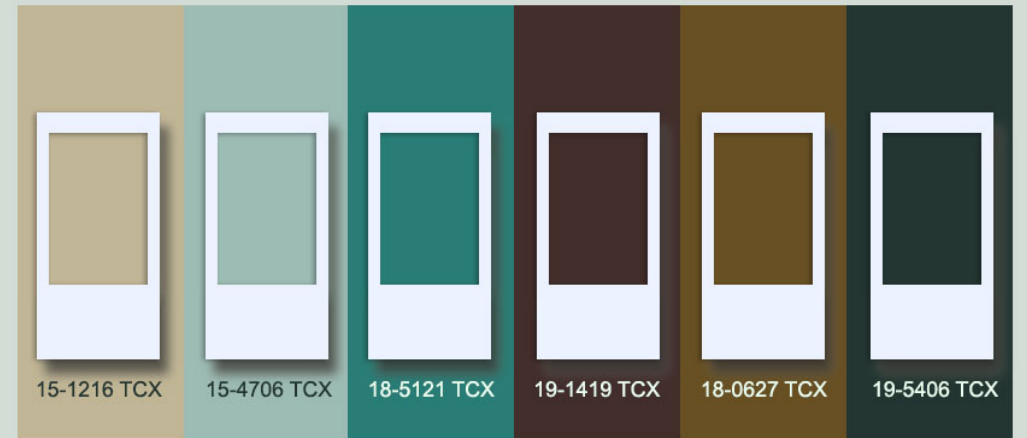


18202_001

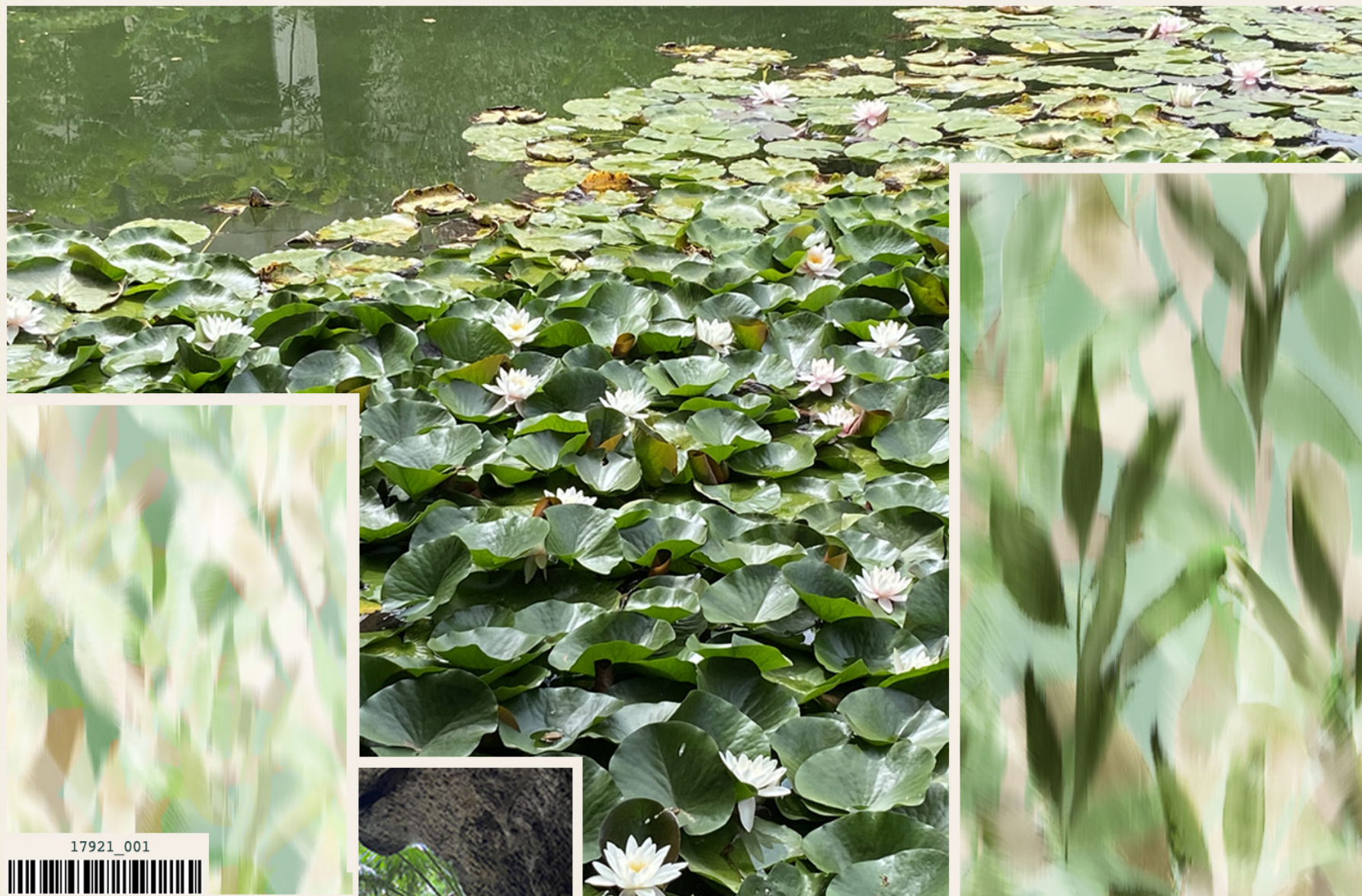


With a rich palette where the most stunning color is the emerald green we matched the interior concept with fashion design and nature recalls, passing through baroque shapes and delicate geometries

EMERALD GREEN/VERDE SMERALDO



LUNAR GREEN/VERDI LUNARI



17921_001

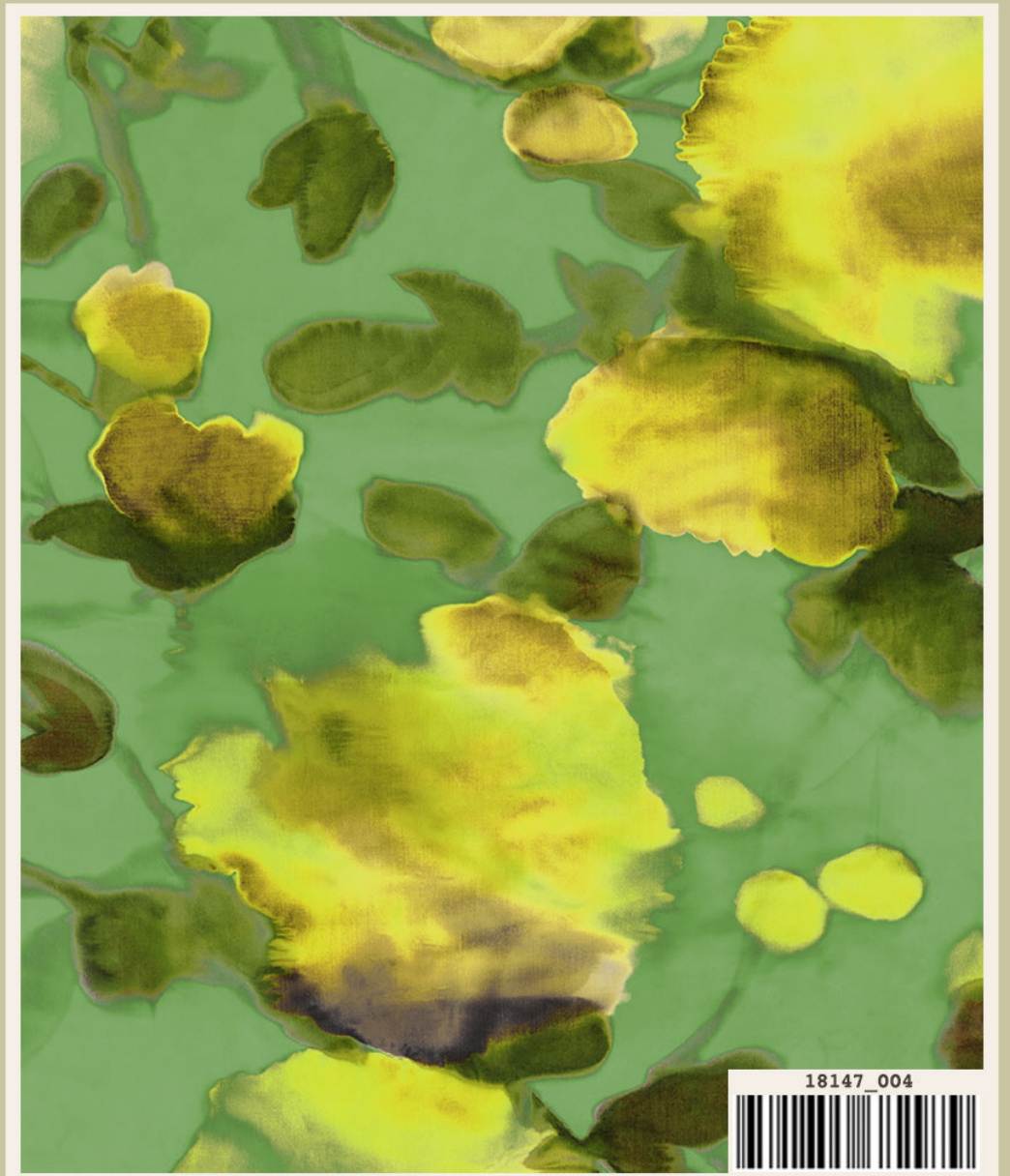
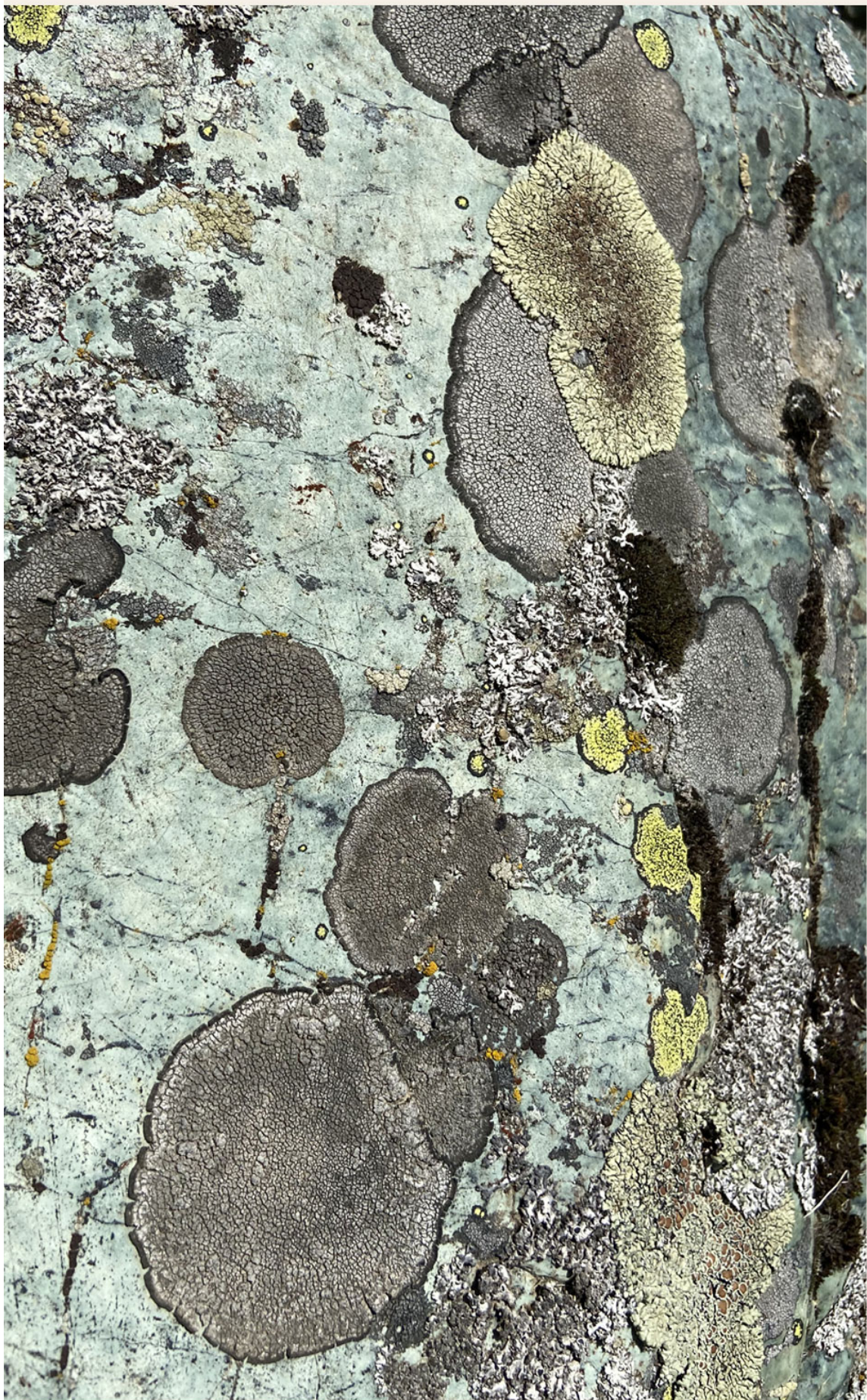


17922_001

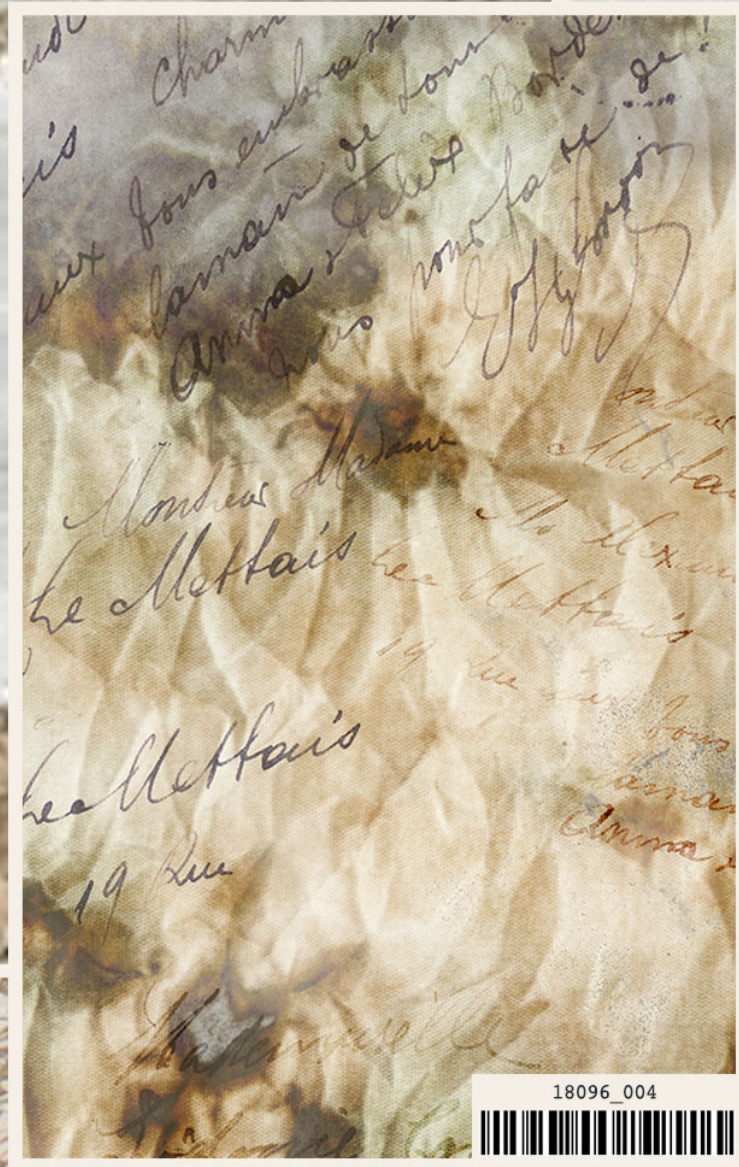
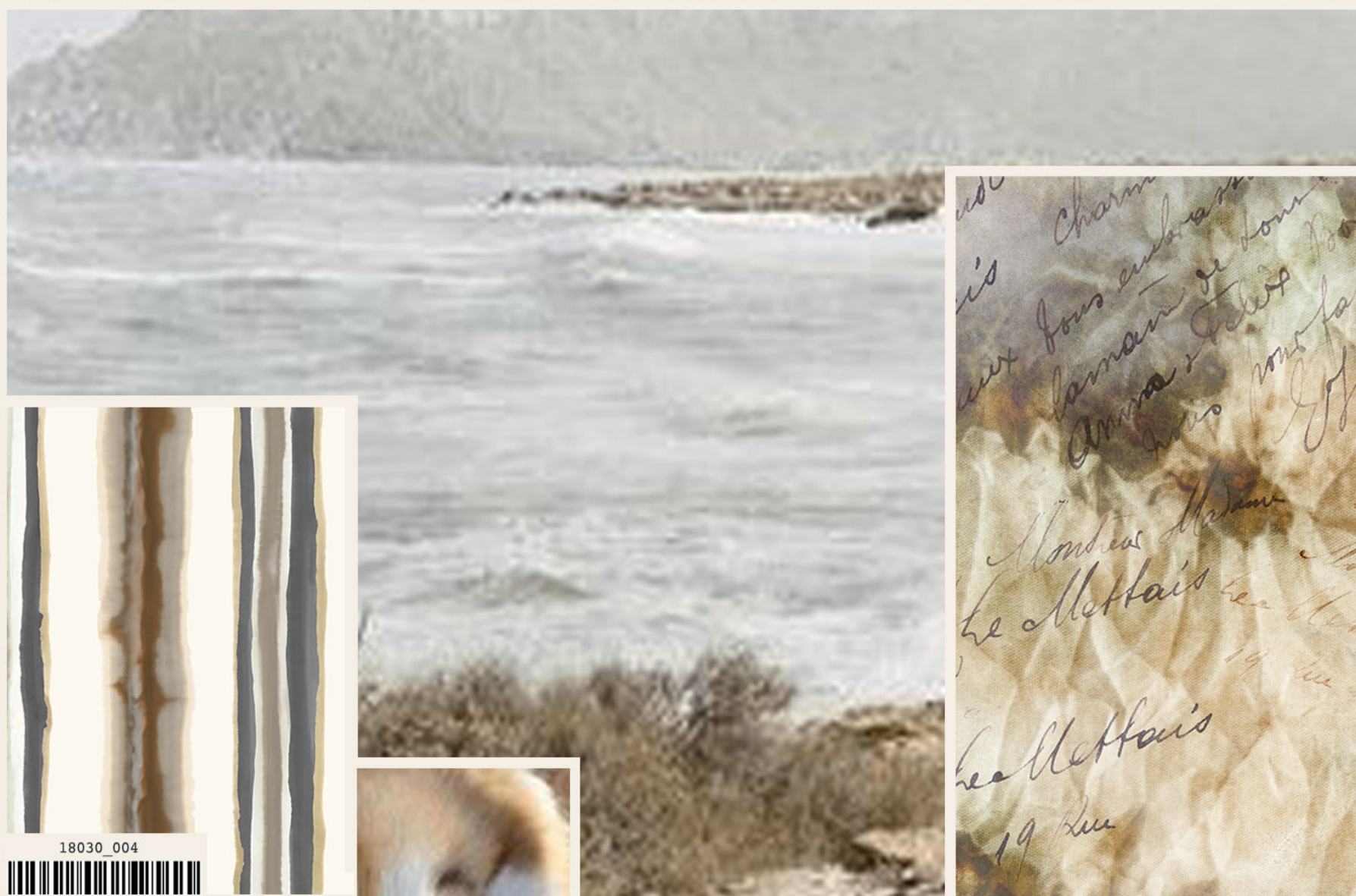


Leaves and delicate flowers colored by different shades of lunar green are ready to dance in the breeze of life and bring us into a luxury nature

LUNAR GREEN/VERDI LUNARI



ASCETICAL COLORS/TONI ASCETICI

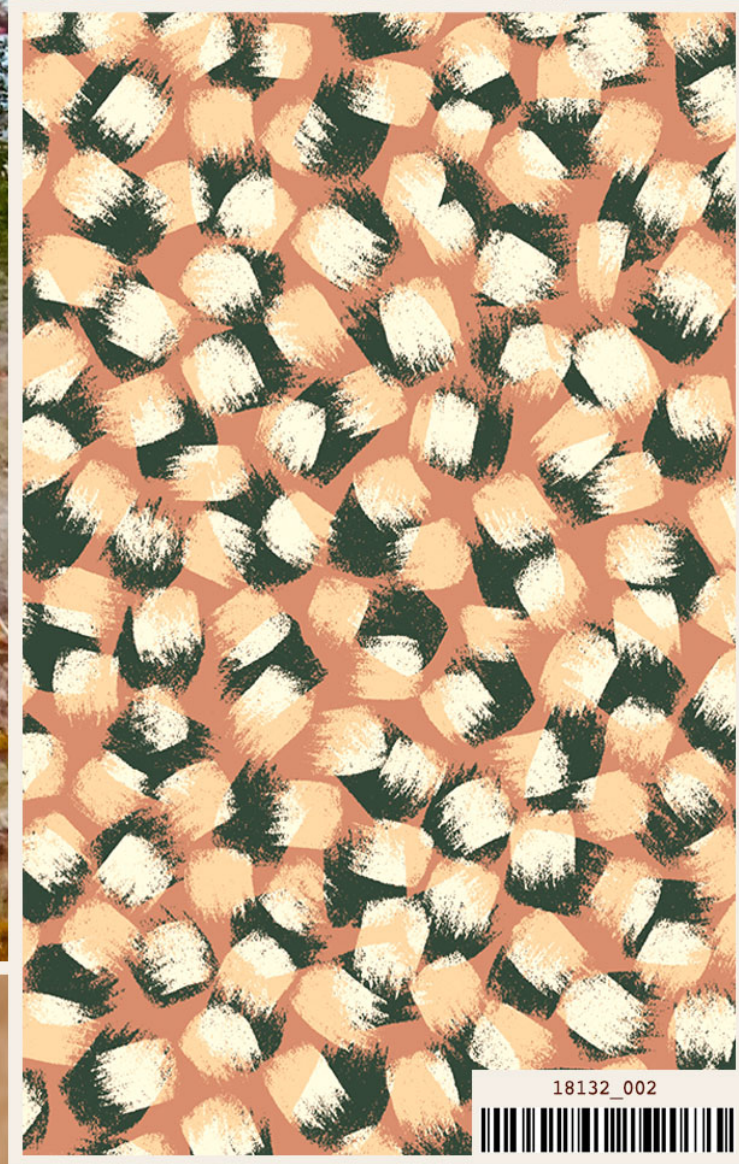
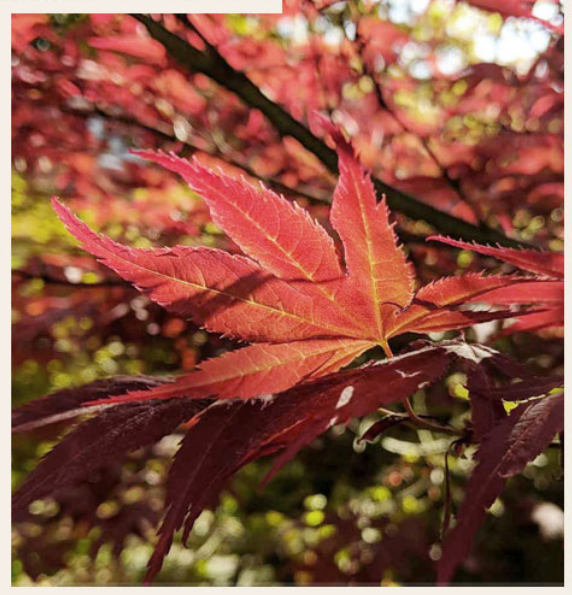
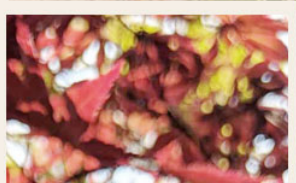
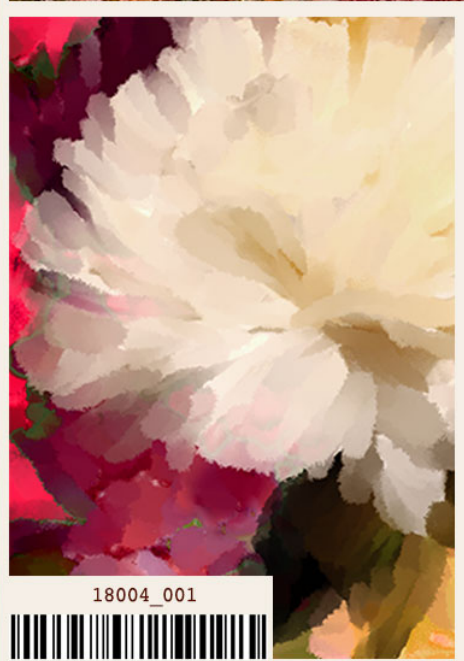
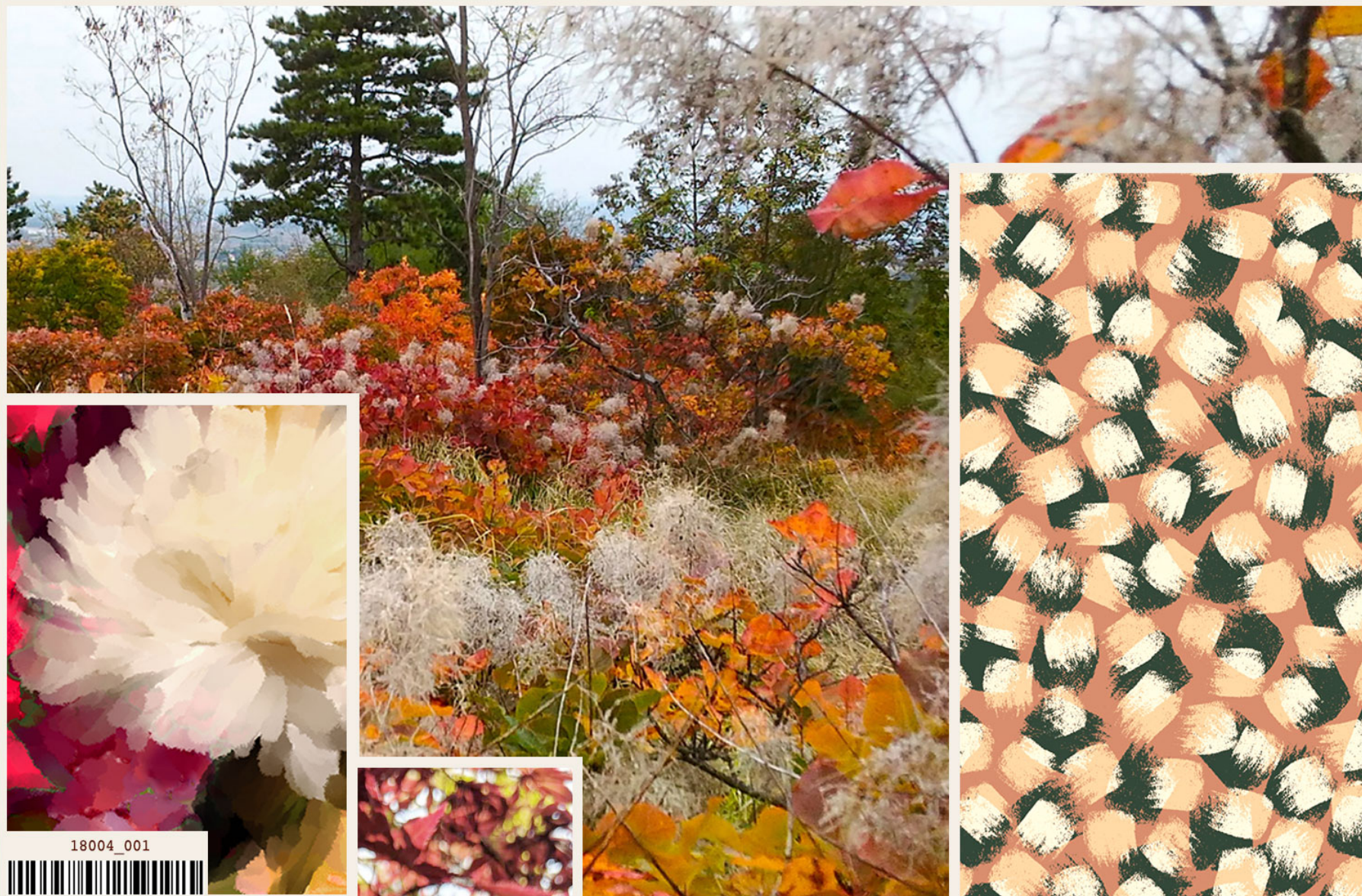


The light reflected on the waves forms vertical flashes on water and slowly the sea ends.
A tender sunshine of ascetical colors rises, as the sea brings sweet words to us, like messages in a bottle...

ASCETICAL COLORS / TONI ASCETICI

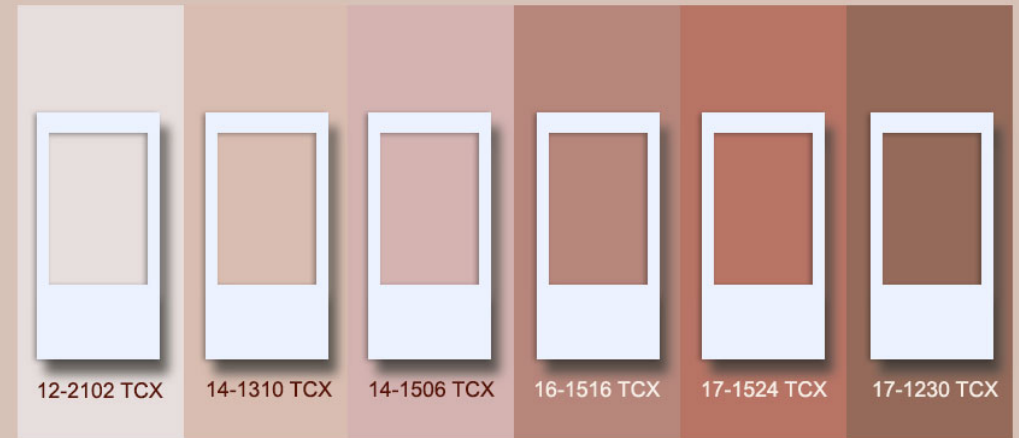


WARM ROSES / CALDI ROSATI

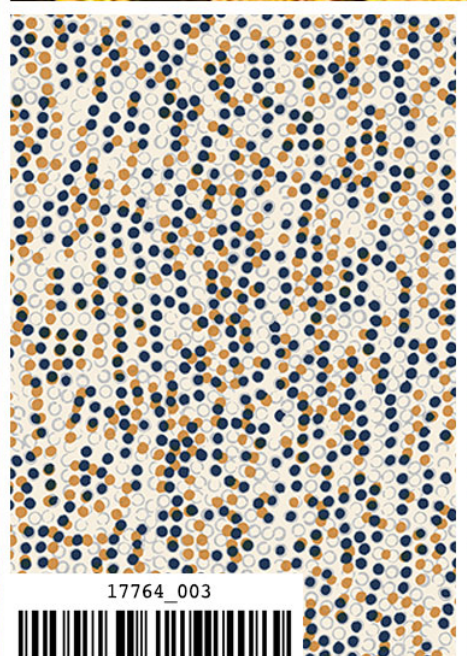
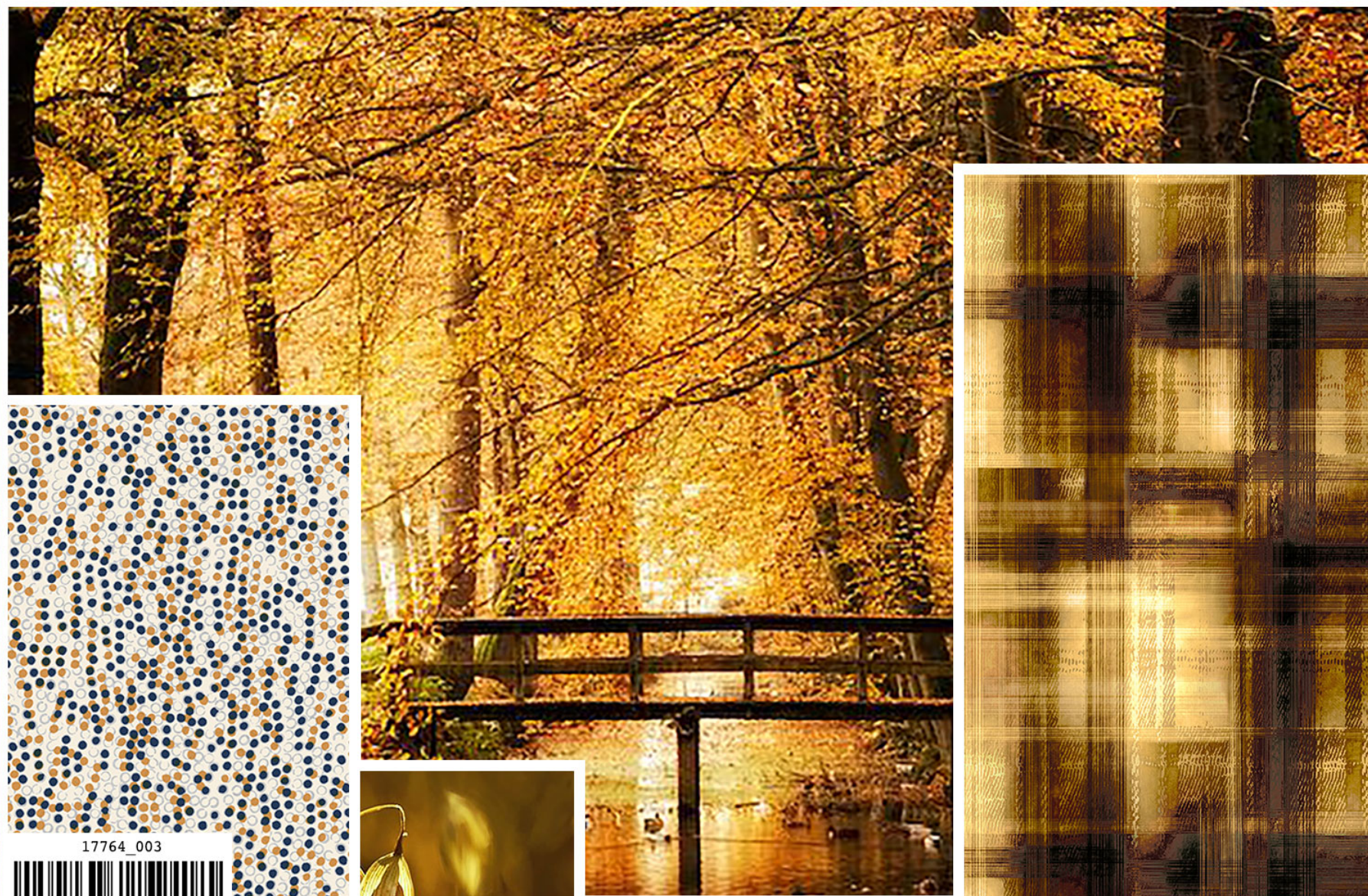


Nature is everything we can see:
the hill, the afternoon, the squirrel,
the hedgehog, the eclipse, the bumblebee..

WARM ROSES / CALDI ROSATI



GOLDEN HOUR / TRAMONTI DORATI



17764_003

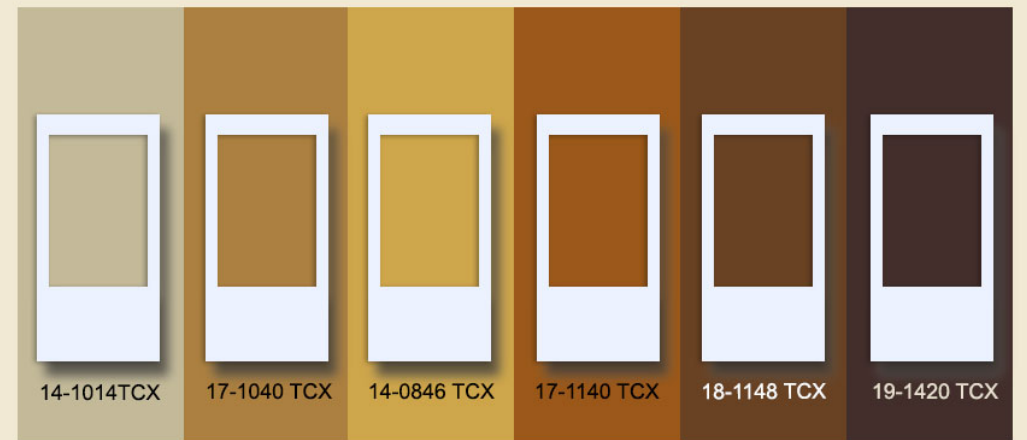
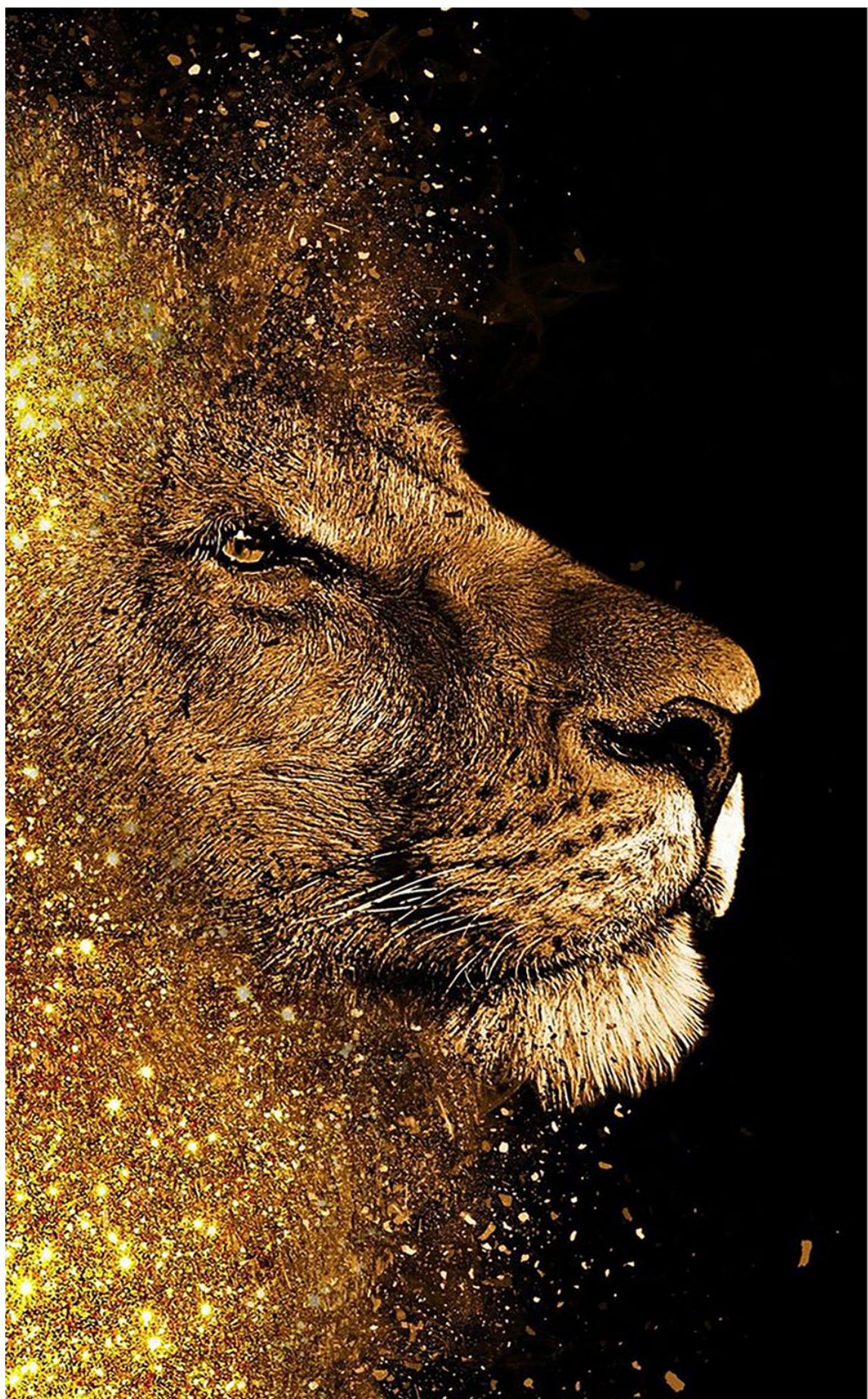


17788_004

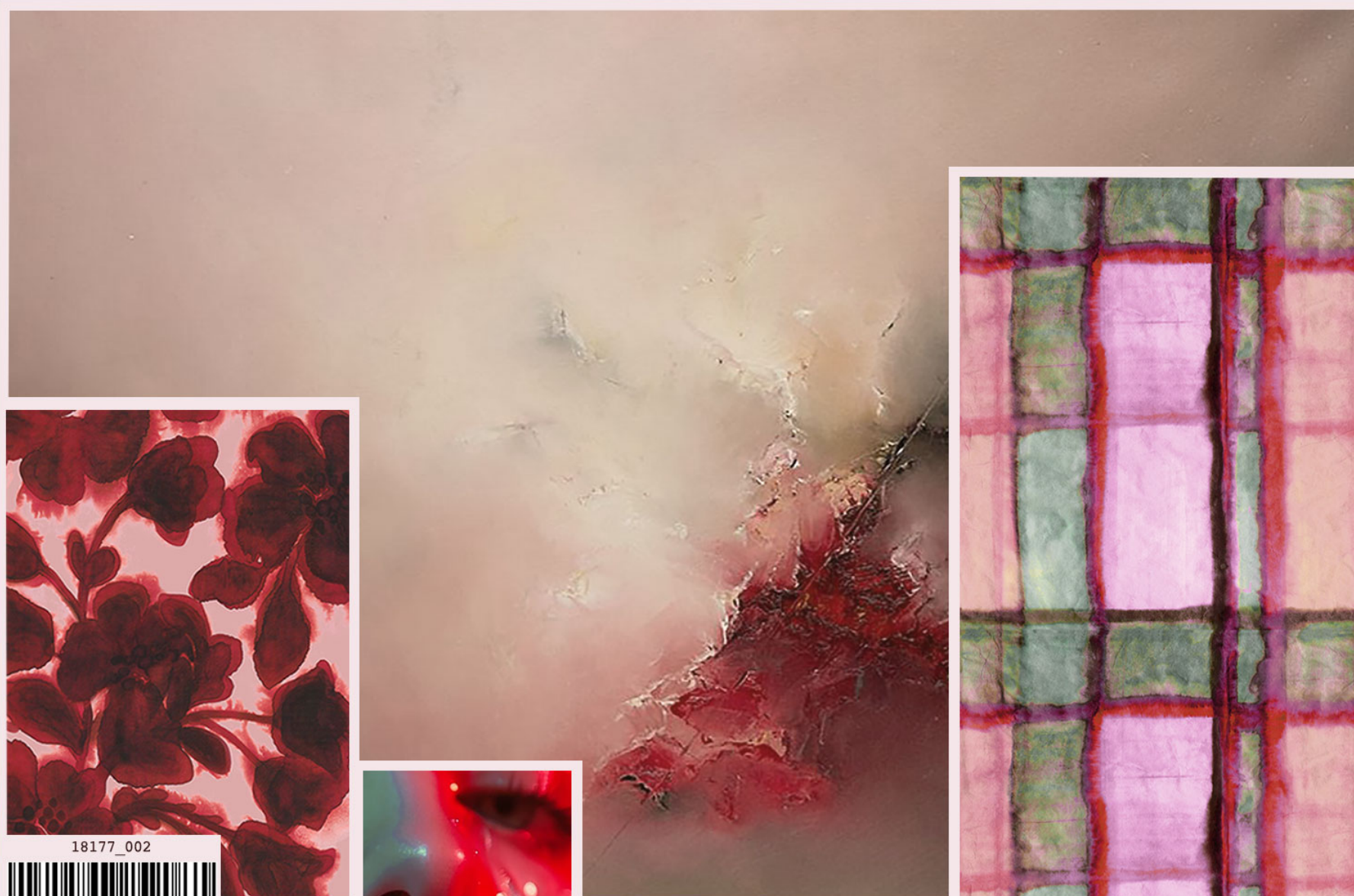


Autumn sunsets heats up and gives a magical golden touch all around. With the sun rays that explode in a warm palette, rich in many tones of yellow...

GOLDEN HOUR / TRAMONTI DORATI



COSMETIC RED/ROSSI COSMETICI



18177_002

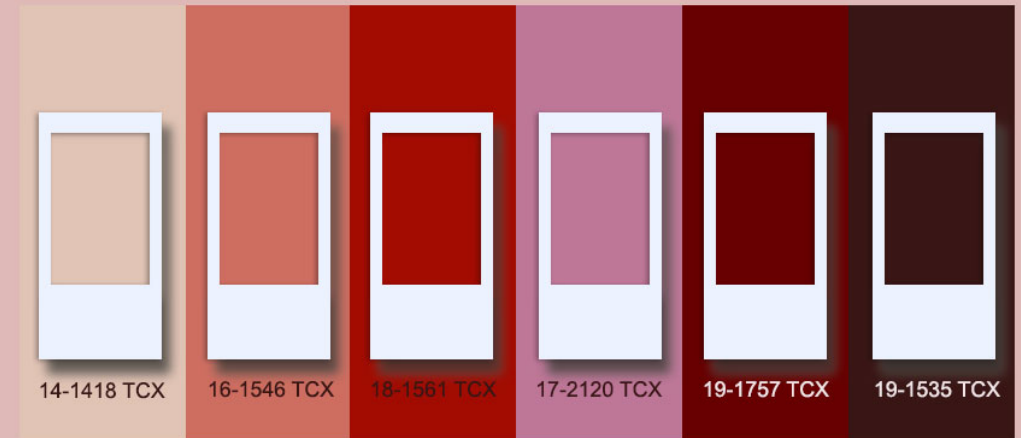


18161_002



Sophisticated brushes of vibrant and feminine pinks and reds, always delicate also in deepest nuances. The elegance of the designs and fabrics reveals a new ladies' world

COSMETIC RED/ROSSI COSMETICI



CYBER PASTELS/PASTELLI LUMINOSI



17662_001

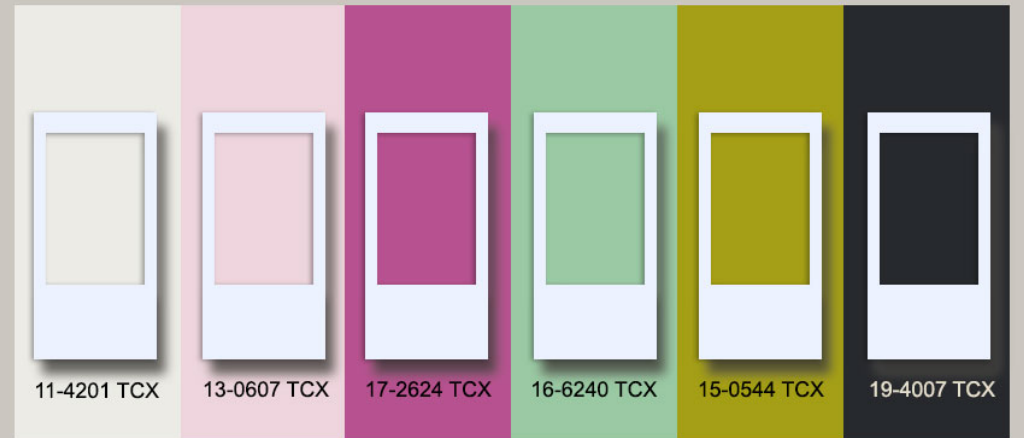


17797_001

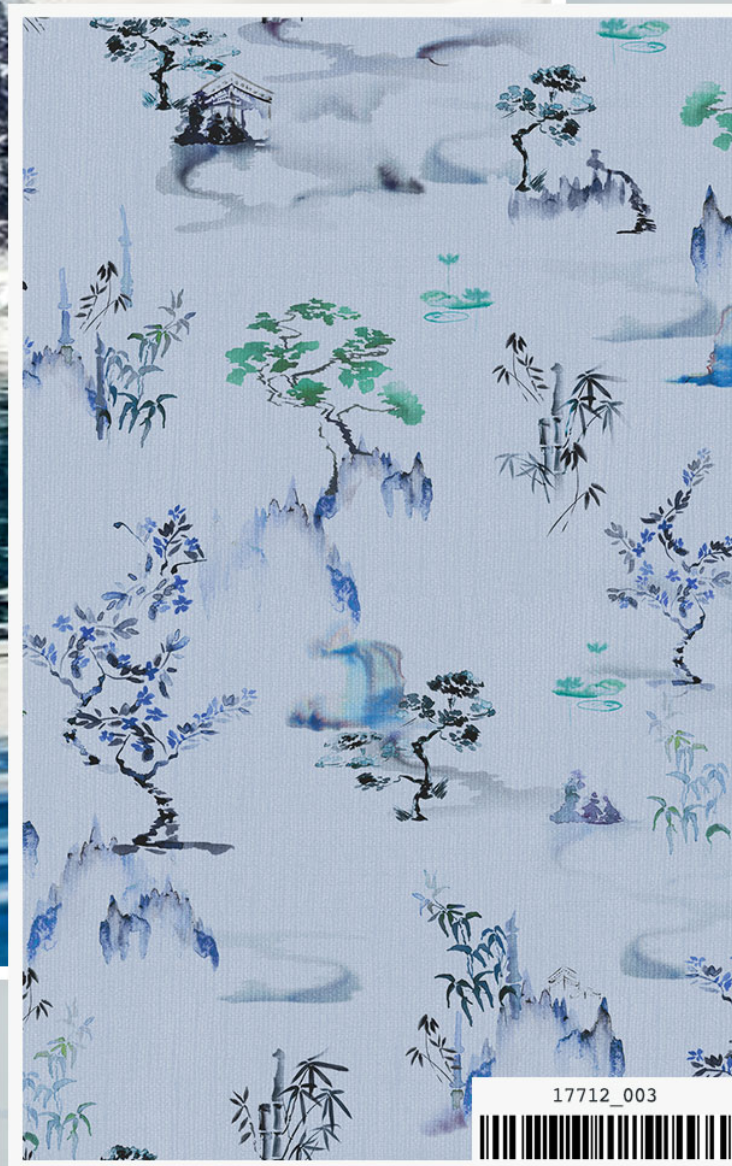


Contemporary colors full of light and energy mixed with a touch of iridescence. Vintage images come to a new life with this brights and powerful color palette...

CYBER PASTELS / PASTELLI LUMINOSI

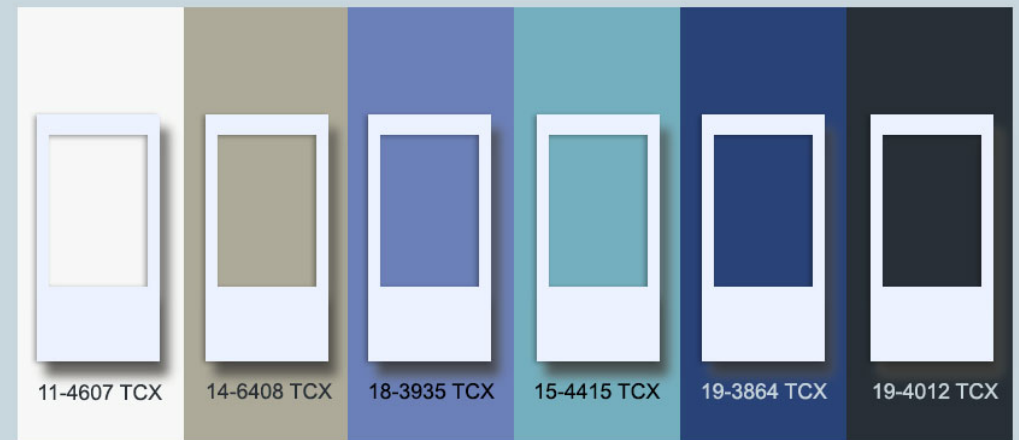


NEW DENIM/SFUMATURE IN BLU

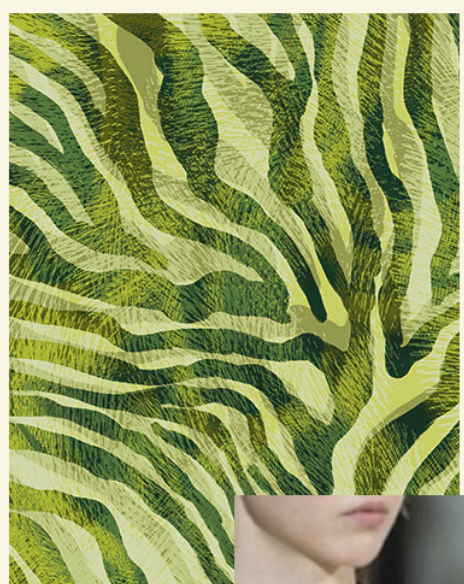
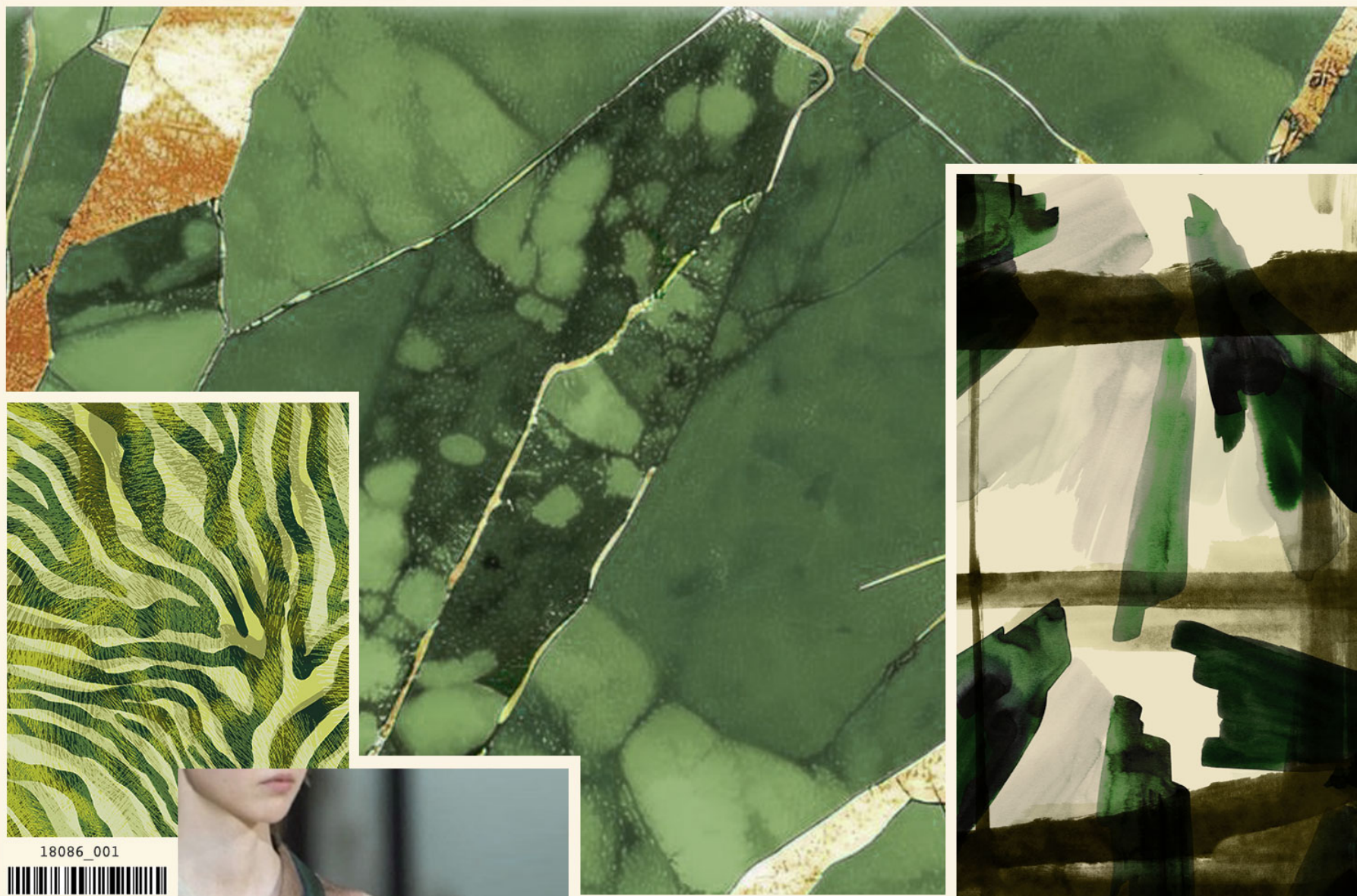


The shades of indigo blue recall a denim world
Stone washed and powdery tones wink to a renewed
hand-made taylored clothes.
The fresh icy blues open your mind, remind us a
cold wind of uncontaminated nature...

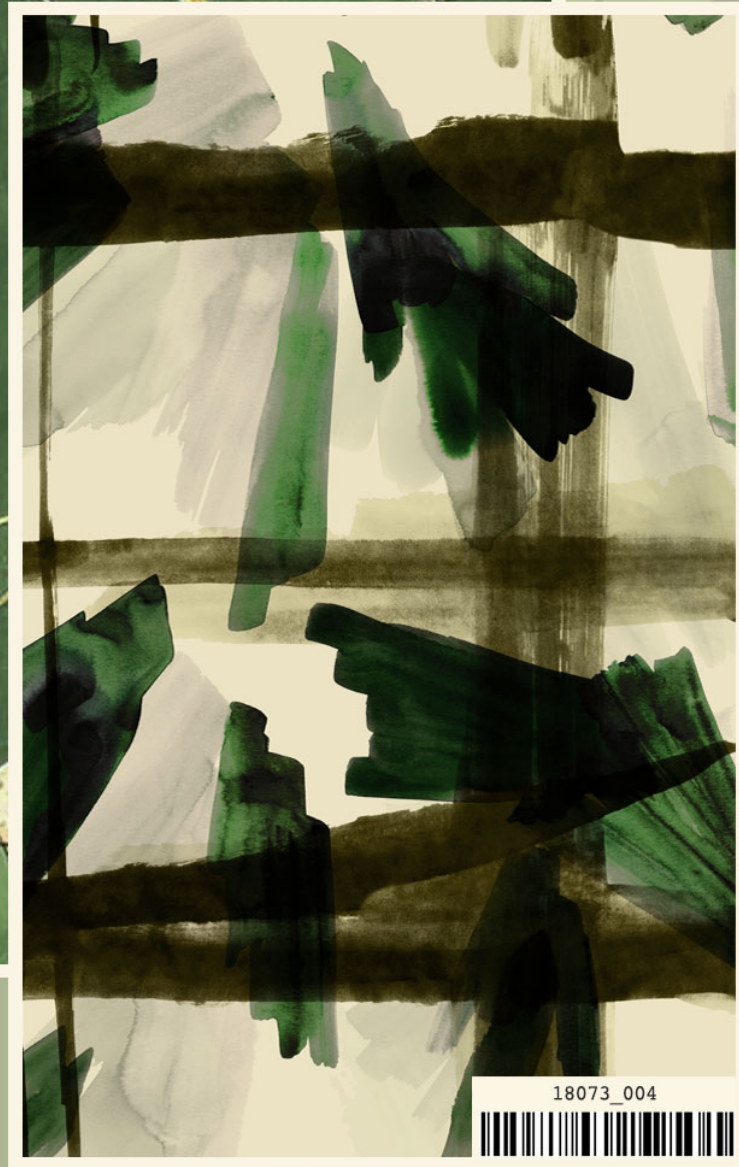
NEW DENIM/SFUMATURE IN BLU



WOODY GREENS / ALLEGORIA DI VERDI



18086_001

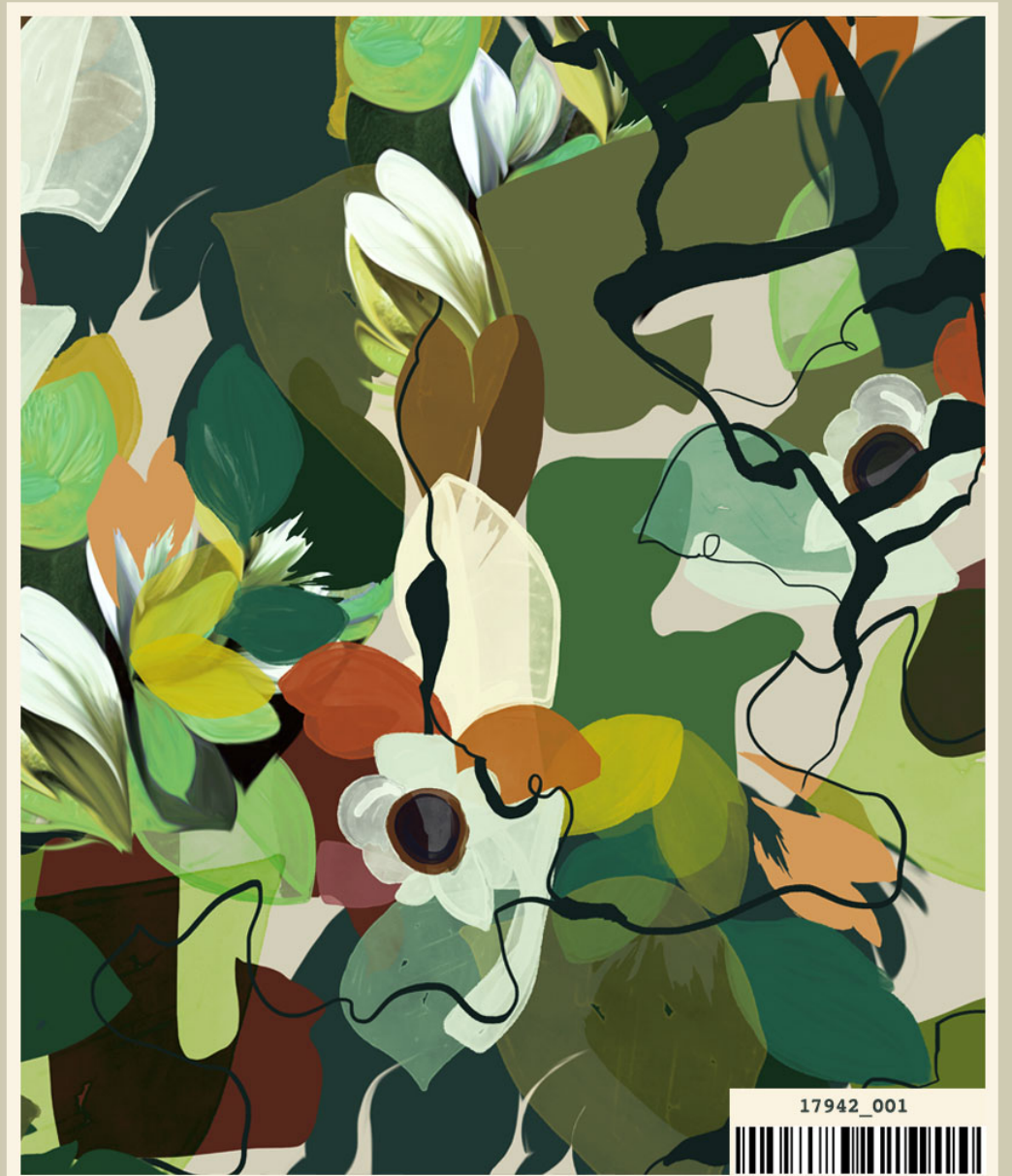
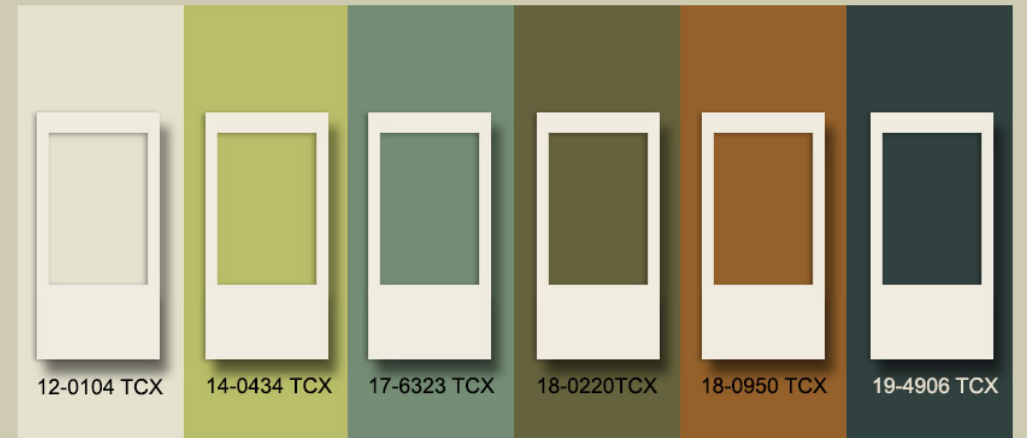


18073_004



Raw and rustic effects mixed with an abstract touch of art create a woody atmosphere that explodes in an allegory of greens

WOODY GREENS / ALLEGORIA DI VERDI

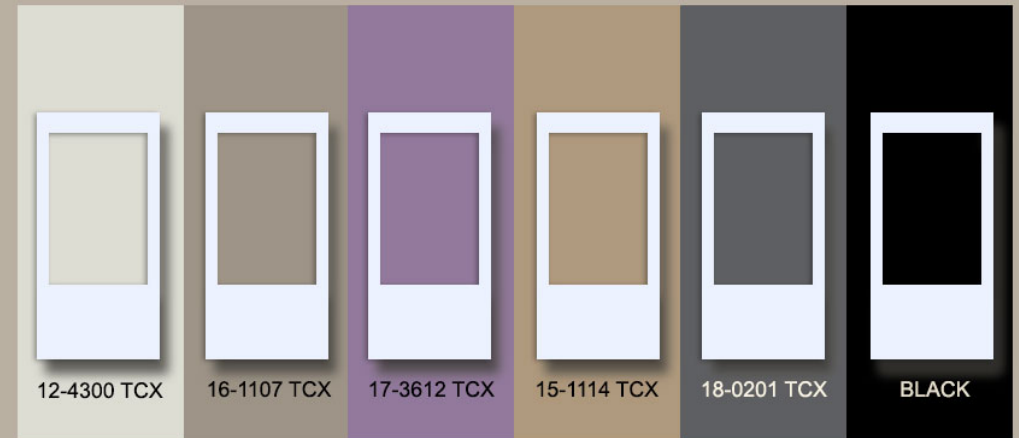


SOBER NEUTRALS / NEUTRI FREDDI

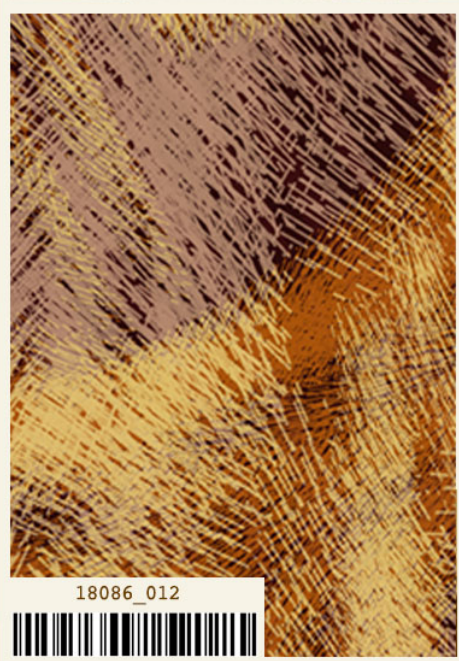


Inspired by sophisticated shades of grey, mixed with warm browns, is the modern way to live the city dress-code...

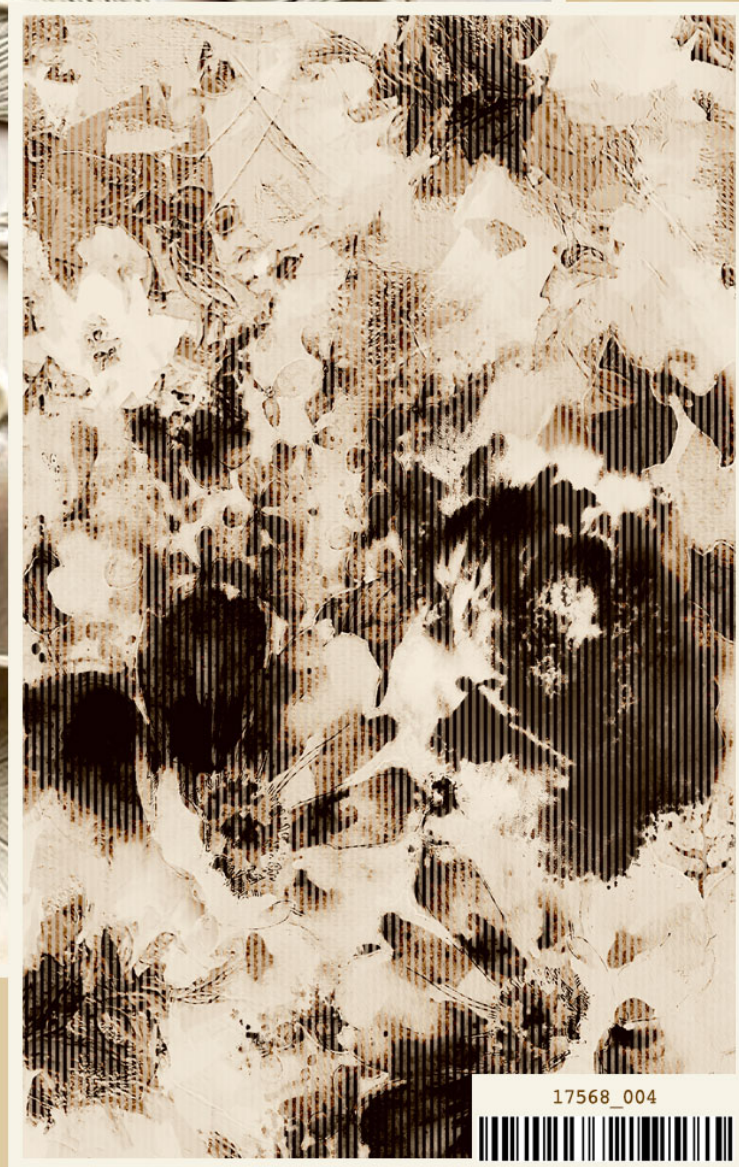
SOBER NEUTRALS / NEUTRI FREDDI



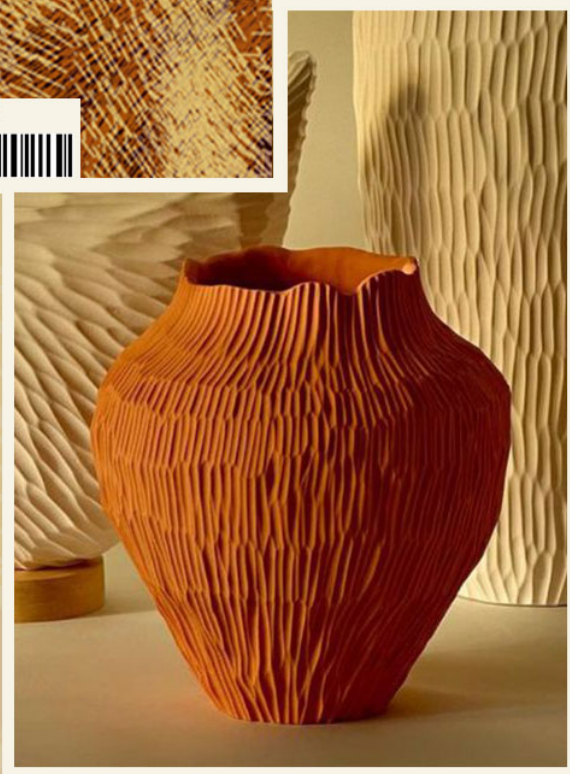
HONEY GOLD/GIALLI DORATI



18086_012

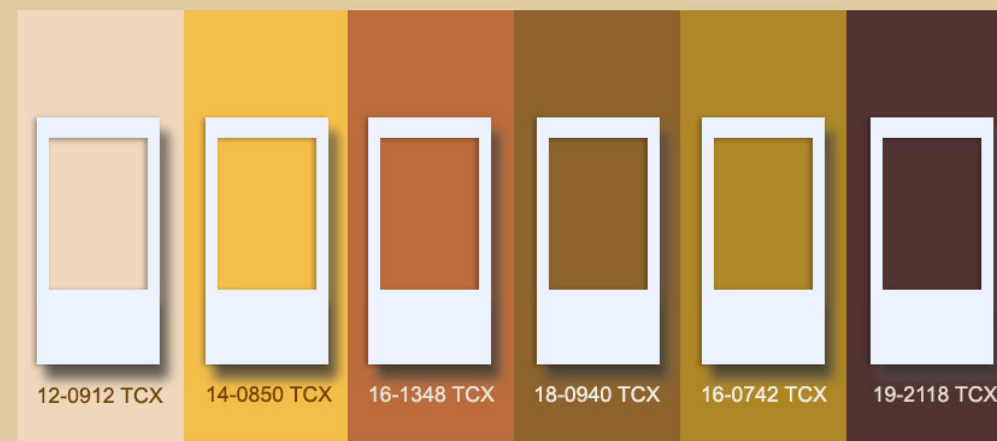


17568_004



Sweet honey yellows create a palette that reveals a "crescendo" of different layers just like a silky and pleated feminine dress

HONEY GOLD/GIALLI DORATI

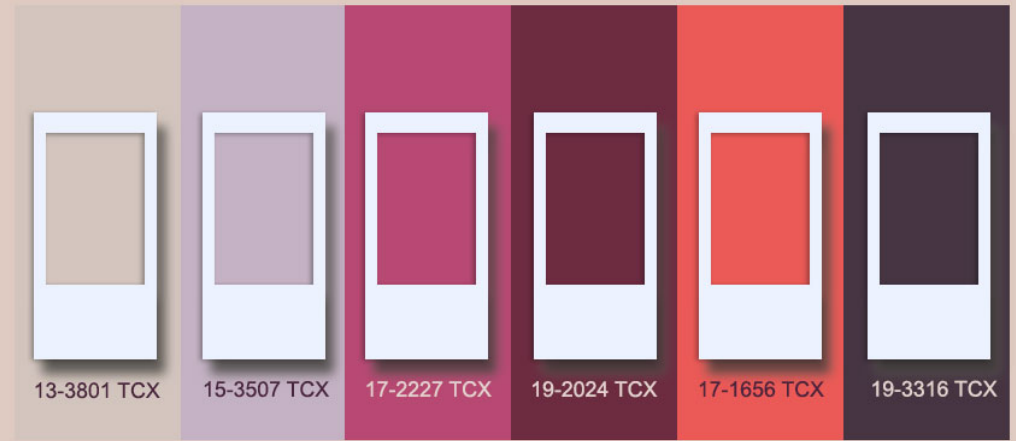


JUBILANT REDS / ARMONIA DI ROSSI



This palette show the importance of the red color, magenta, coral, purple and pink in this new season. The red is hot and vibrant: the perfect expression of the power of colors...

JUBILANT REDS / ARMONIA DI ROSSI

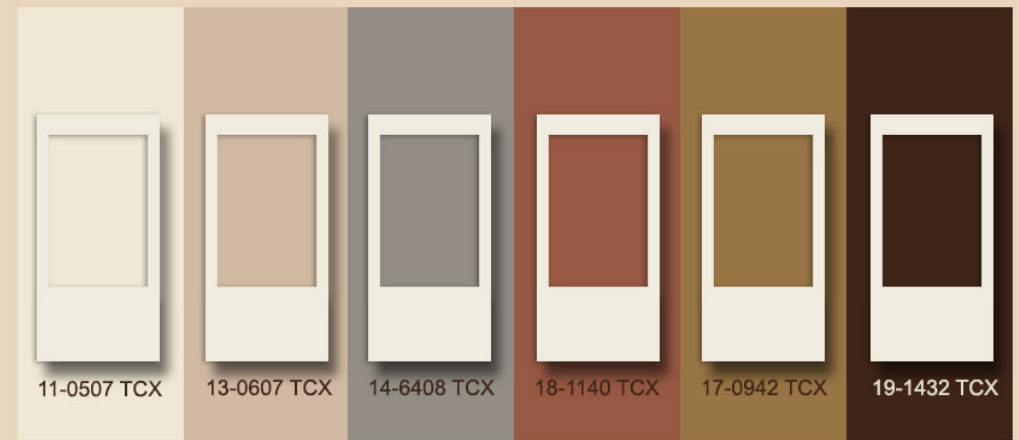


WARM NEUTRALS / NEUTRI AVVOLGENTI

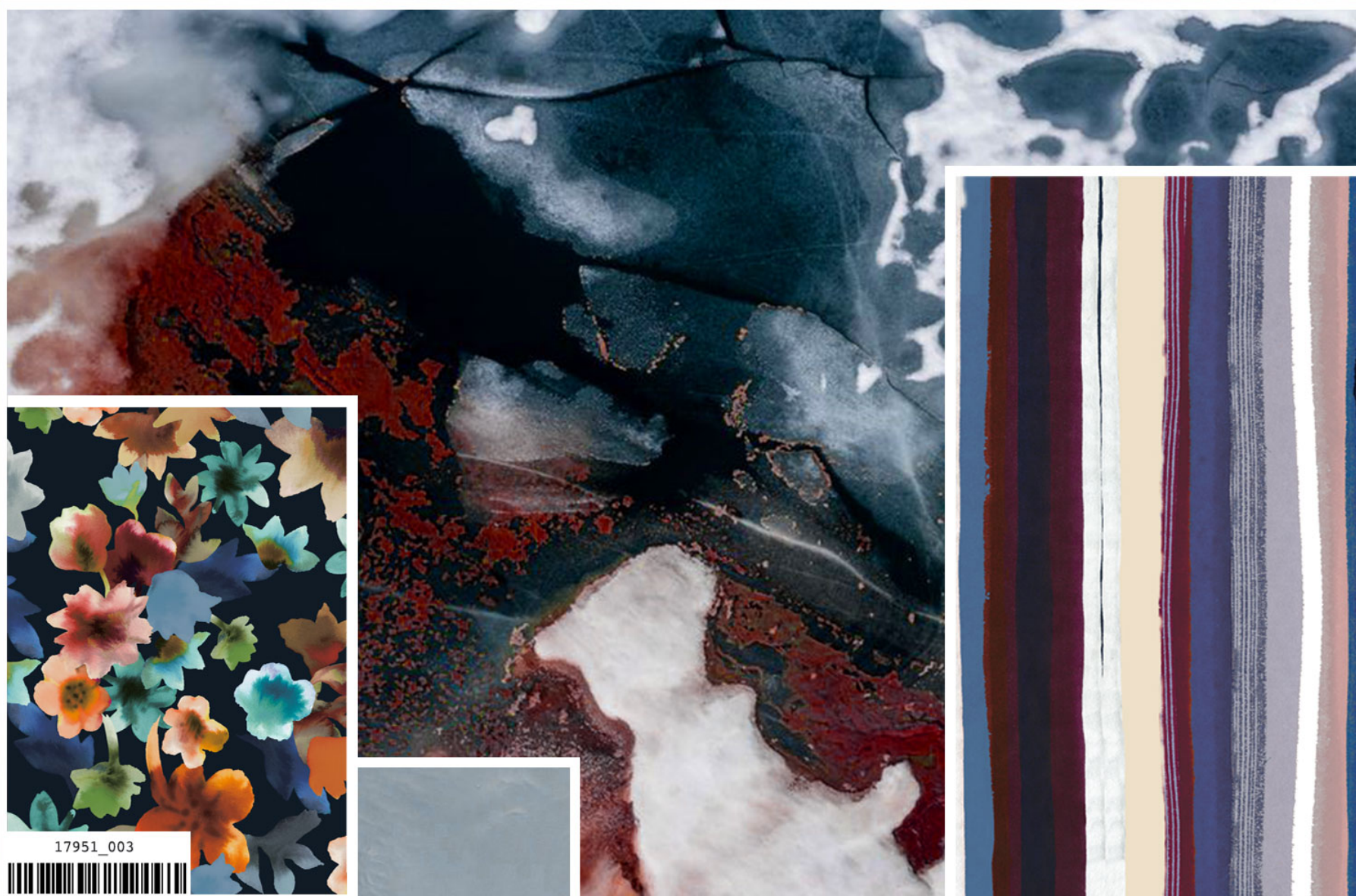


Warm and soft like a cold evening in front of the fireplace, the neutral colors mark the transition from autumn to winter

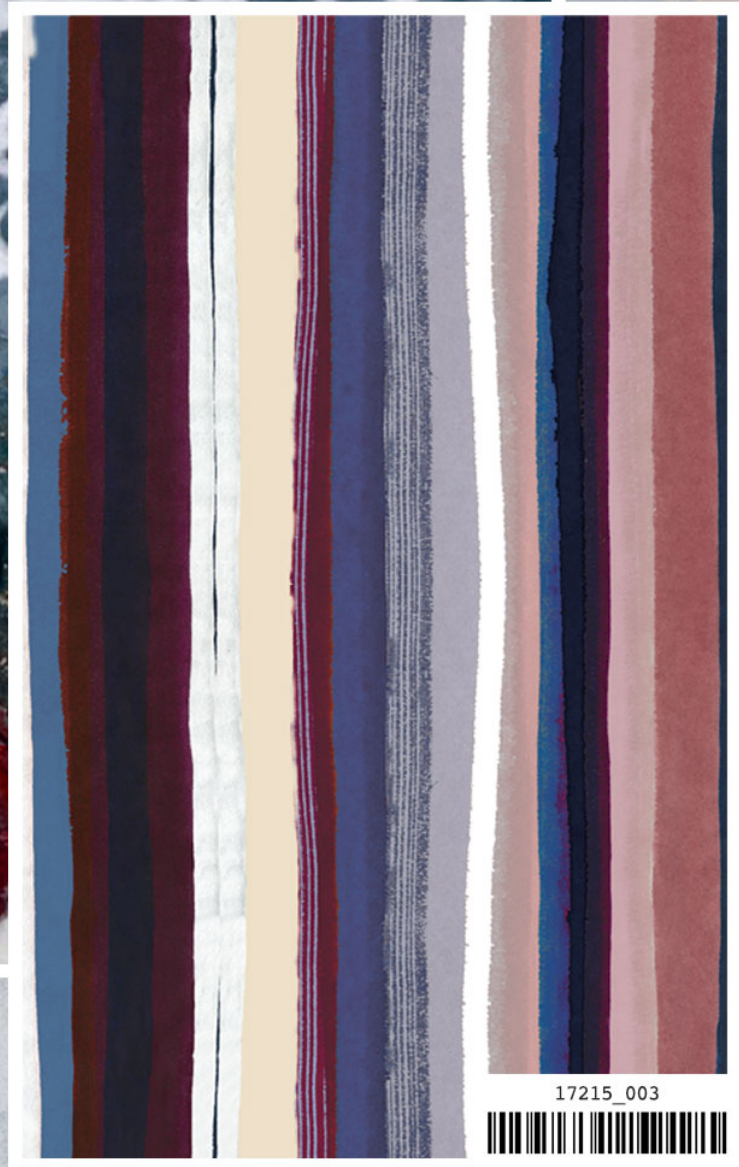
WARM NEUTRALS / NEUTRI AVVOLGENTI



DARK SHADES / SCURI INTENSI



17951_003

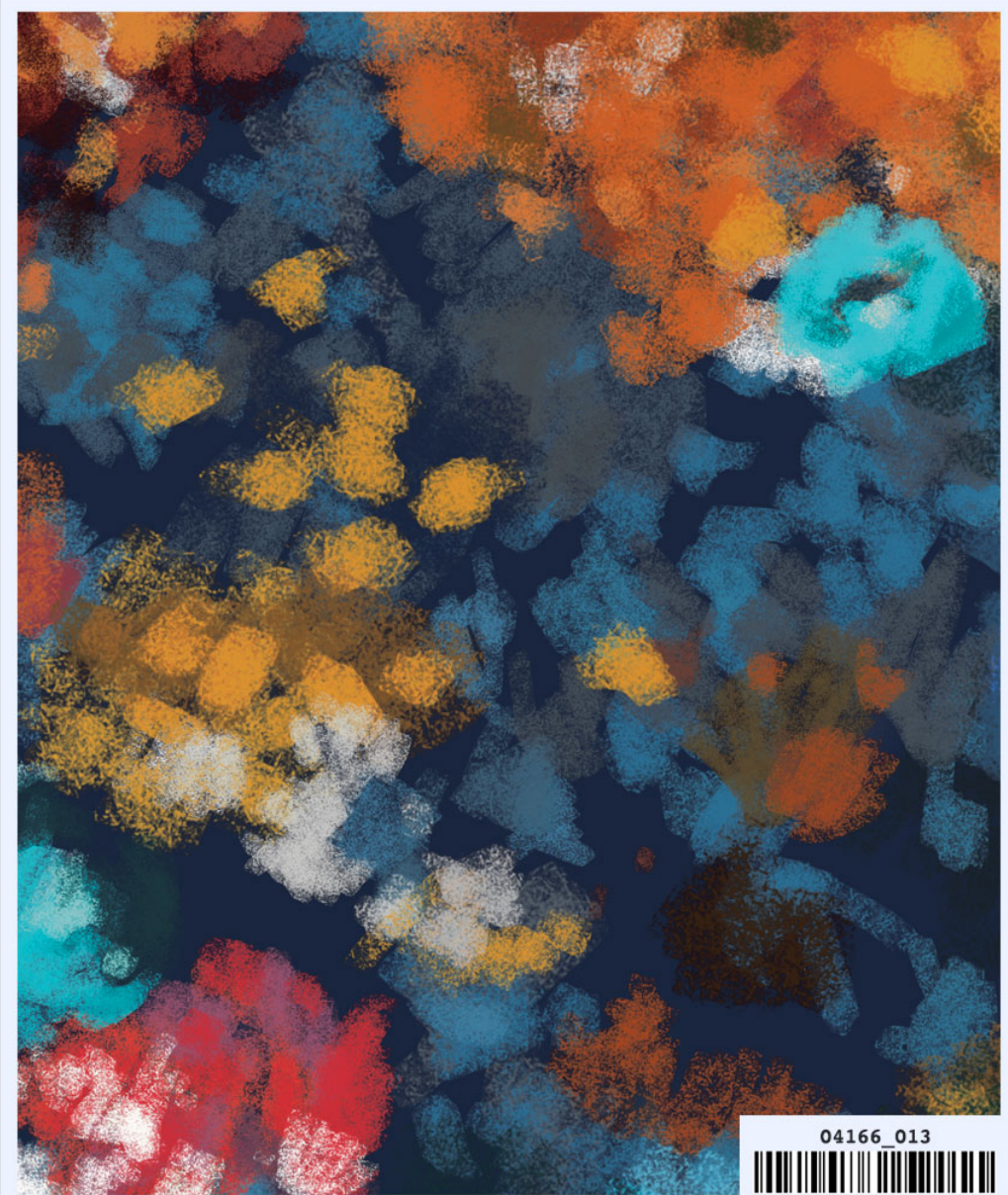
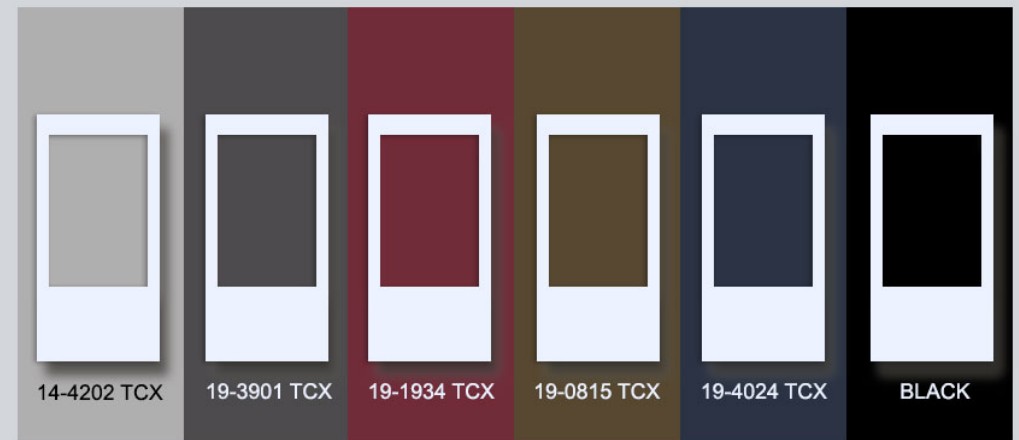


17215_003



Blurry flowers, watercolors and abstract effects for an intense palette in dark color shades. This palette reminds us of the deep side of our mind and the liquidity of the Nature...

DARK SHADES / SCURI INTENSI



MONOCHROMATIC / BIANCO & NERO



18222_004

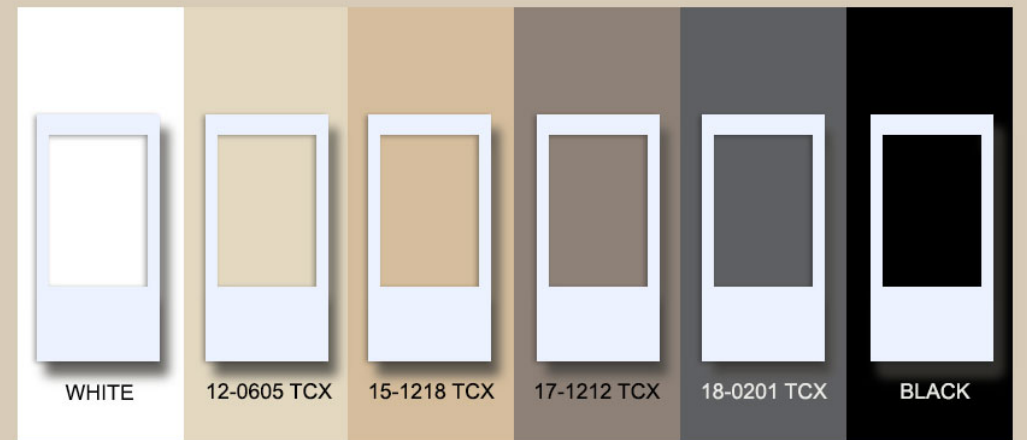


18084_004



From light taupe to intense black this palette reminds us of a stormy sky over the sea... The sinuous shapes of oriental flowers, the baroque prints and the lace effects are a feminine recall of a sweet black & white palette.

MONOCHROMATIC / BIANCO & NERO





E.MIROGLIO SRL	E.MIROGLIO EAD
Uffici Italia: Loc. Carretta, 2	Uffici Bulgaria: Industrial zone, P.O. Box 161
12040 PIOBESI D'ALBA (CN) - Italia	8800 Sliven - Bulgaria
Tel. +39 0173 610213 - Fax +39 0173 619923	Tel. +359 44 500899 - Fax +359 44 500774
P.IVA IT 03021340041	VAT BG 119603547
Mail: oreste.brignolo@emiroglio.com	
Web site: www.emiroglio.com	